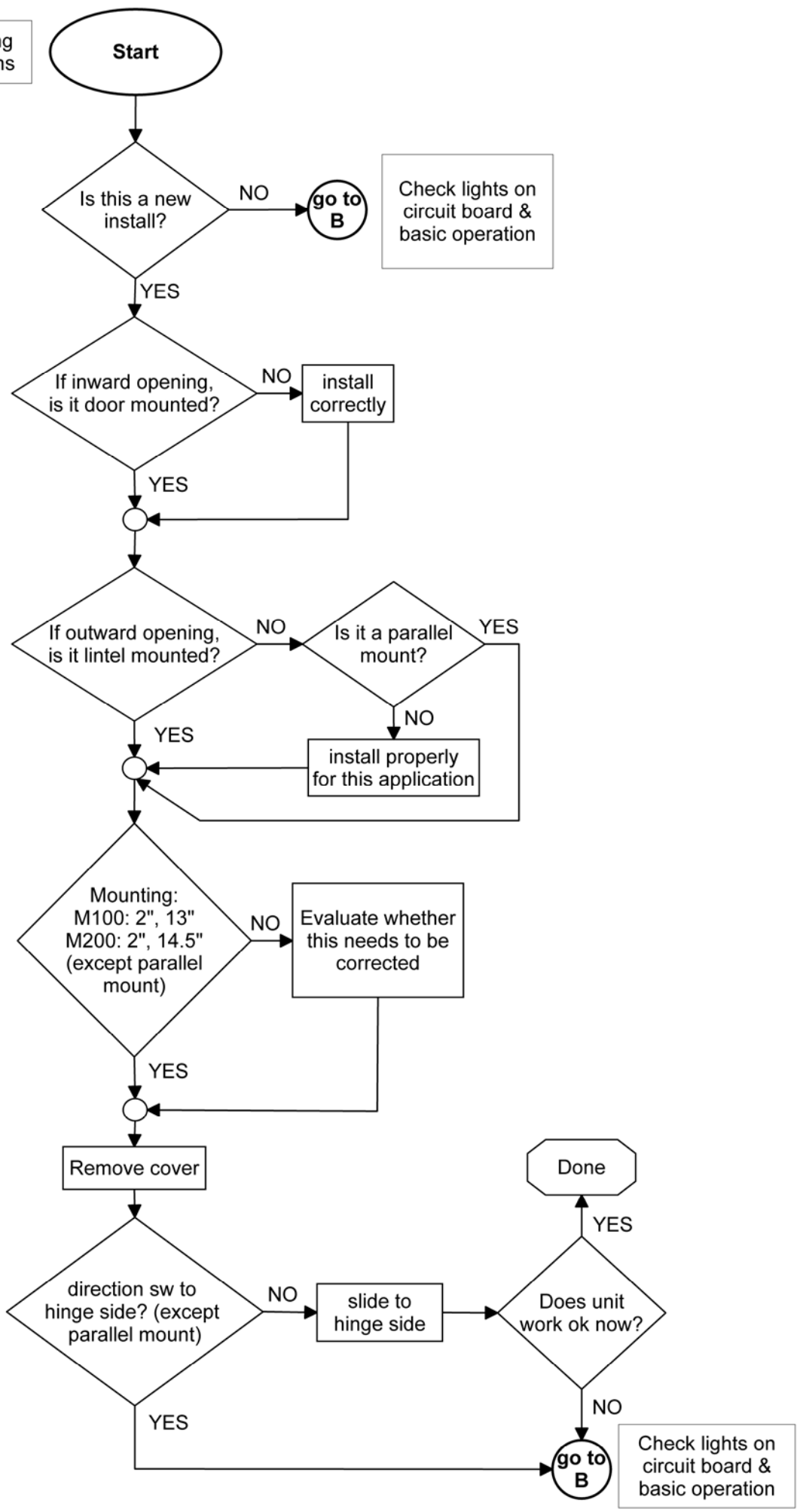
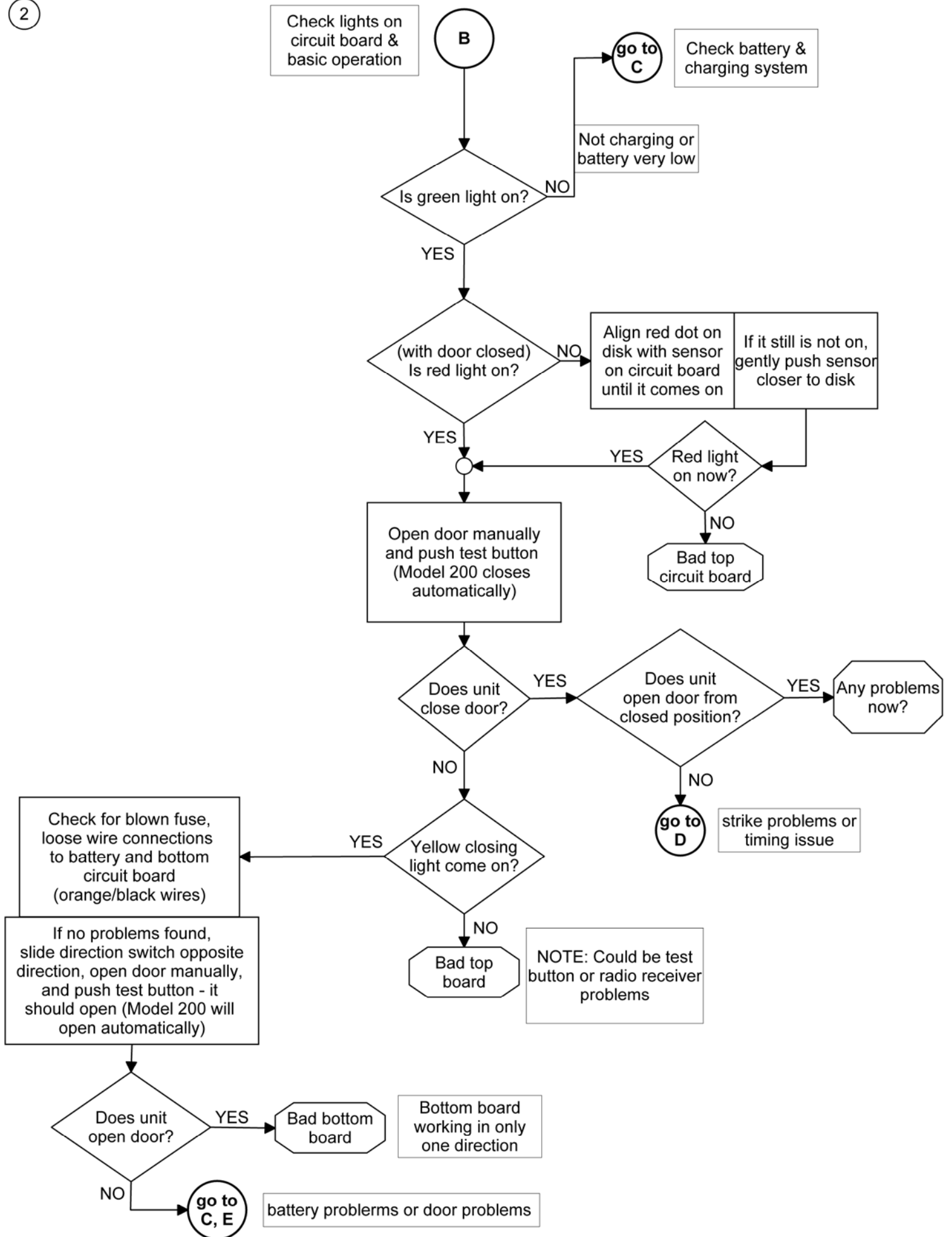


1

Mounting questions

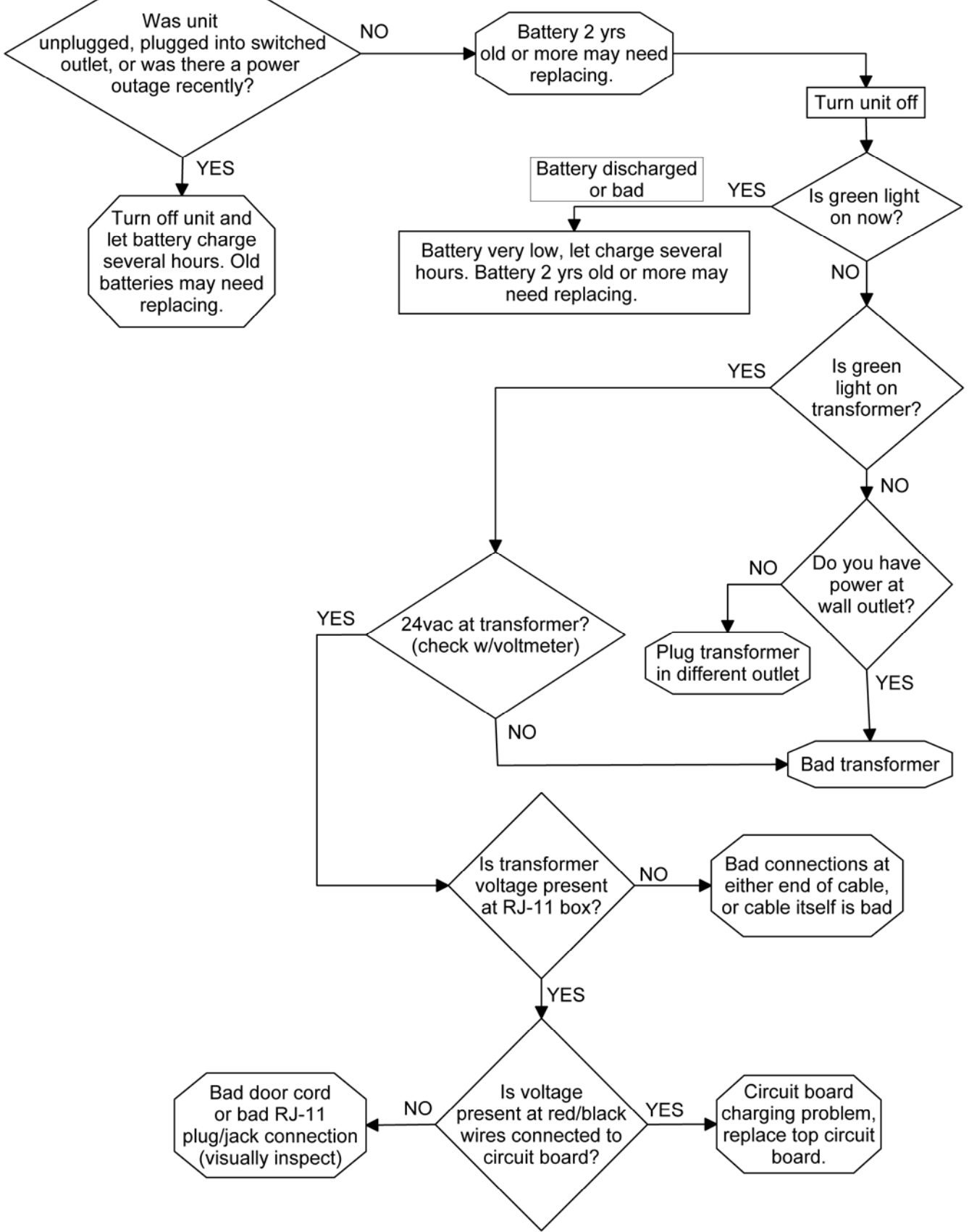




3

Check battery & charging system

C



4

strike problems

D

Actuate unit from door closed position (red light is lit)

Does D16 yellow strike light come on?

Move yellow strike wire to lower red terminal (3-position), pull on door (w/switch ON)

Is strike released?

Change to "fail secure" and test again

12vdc present at strike wires? (measure with voltmeter)

Did customer change strike to "fail safe"?

Bad strike

Bad top circuit board

Does motor run briefly?

Go to F

Triggering problems

Check for voltage under RJ-11 cover (yellow/green wires)

12vdc present?

Bad wiring to strike

Bad door cord or RJ-11 jack

Door issues

Go to E

